

## Handrail, Lindenplatz Baden

<b>Customer/installation engineer:</b>	Lindenplatz Baden International School Fitter: Badento AG; electrician: Lebag Wettingen; planner: rgp Architekten Baden
<b>Stipulation:</b>	To illuminate the stairway as brightly as possible
<b>Solution:</b>	LaneLED Inox
<b>Article:</b>	158162/158169
<b>Quantity:</b>	approx. 26m
<b>Equipment:</b>	LaneLED Inox batten light fitting Type 6
<b>Areas of application:</b>	Stairway handrail

### Starting situation

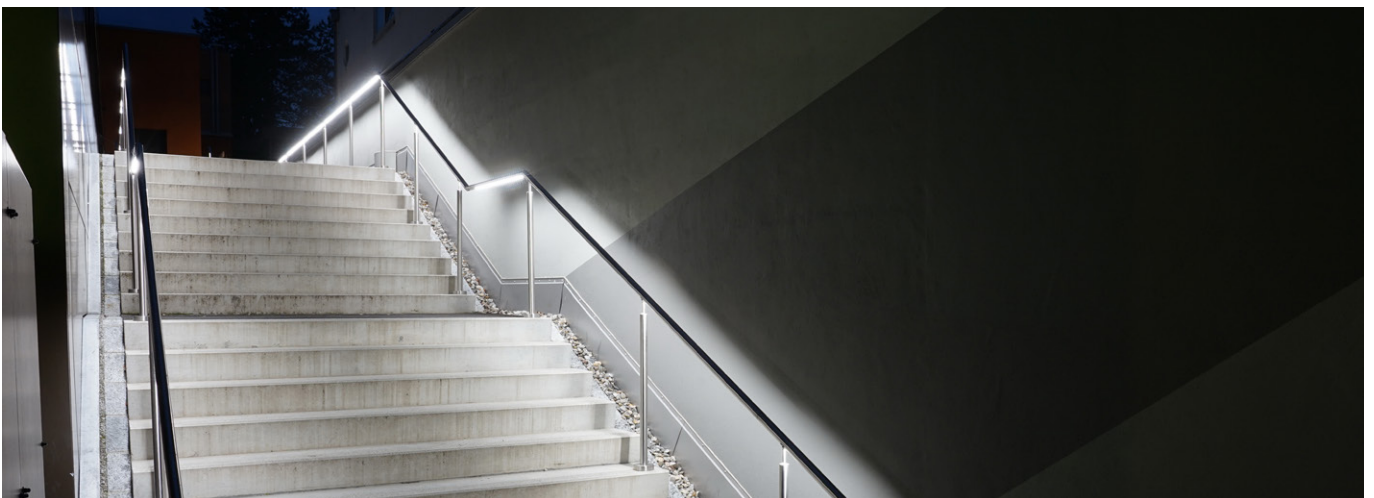
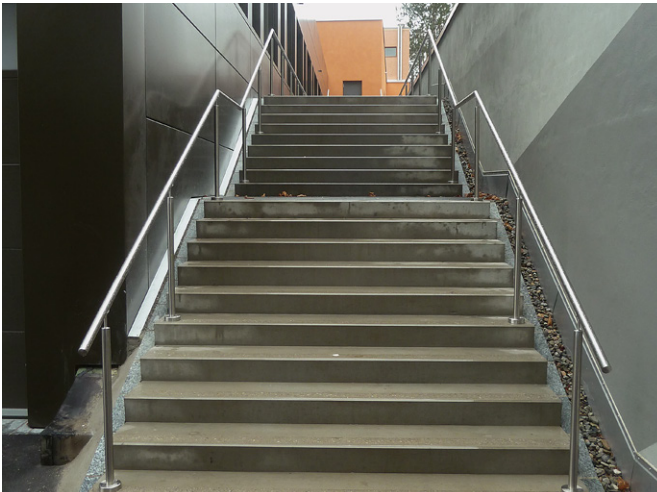
Following the complete restructuring of the entire school, a new stairway handrail was needed. A solution for the optimal illumination of the outdoor stairway was also sought.

The LaneLED Inox addresses both of these requirements in just one product. The lightweight design provides the stairway with a very open appearance and allows its full width to be utilised.

This stairway is now sufficiently illuminated and no longer attracts any unwanted loitering.

### Customer benefits

- Improved safety in the dark
- Protection against vandalism
- Protection against tripping
- Age and weather-resistant
- Slim, timeless design



V 0216